

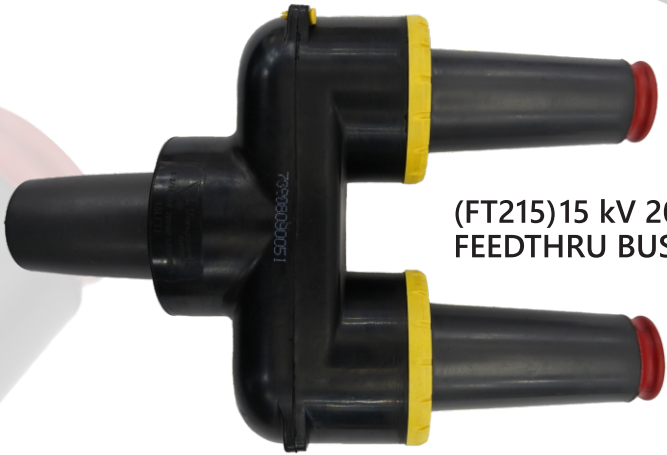
200 A LOADBREAK BUSHING INSERTS. (BI215, BI225 & FT215)

Vanguard Electric's Load-break Bushing Insert line meets all IEEE std. 386 requirements and is designed for installation on equipment (transformer, switches, etc.) having a 200 A bushing wells meeting the IEEE interface requirements. Used with their corresponding accessory i.e. elbows the load-break bushing insert provides a shielded and submersible connection.

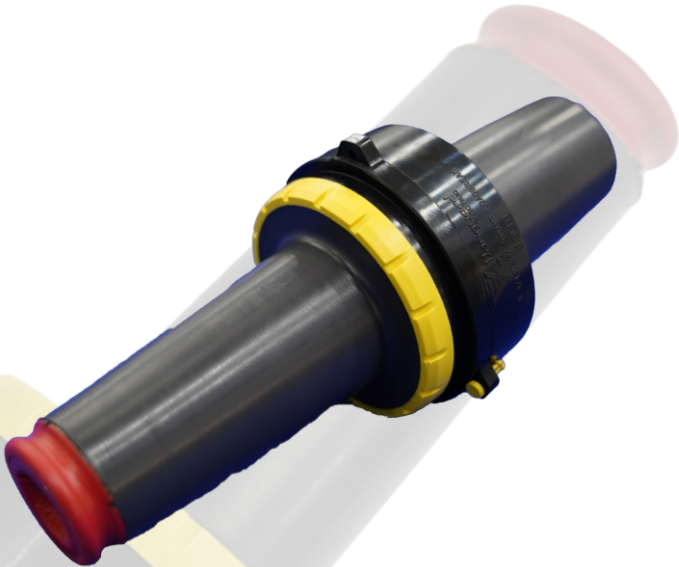
RATINGS

	BI215	BI225
VOLTAGE		
Voltage Class	15 kV	25 kV
Maximum Rating Phase to Phase	14.4 kV	26.3 kV
Maximum Rating Phase to Ground	8.3 kV	15.2 kV
AC 1 Minute Withstand	34 kV	40 kV
DC 15 Minute Withstand	53 kV	78 kV
BIL and Full Wave Crest	95 kV	125 kV
Minimum Corona Voltage Level (kV)	11 kV	19 kV
CURRENT		
Continuous Current Rating	200 A. RMS	200 A. RMS
Switching Current Rating	10 operations at 200 A rms at 14.4 kV	10 operations at 200 A rms at 26.3 kV
Fault Closure Current Rating	10,000 A rms symmetrical at 14.4 kV for 0.17 s after 10 consecutive successful switching operations.	10,000 A rms symmetrical at 26.3 kV for 0.17 s after 10 consecutive successful switching operations.
Short Time Current Rating	10,000 A rms symmetrical for 0.17 s	10,000 A rms symmetrical for 0.17 s
	3,500 A rms symmetrical for 3.0 s	3,500 A rms symmetrical for 3.0 s

FT215
15 kV
14.4 kV
8.3 kV
34 kV
53 kV
95 kV
11 kV
200. A. RMS
10 operations at 200 A rms at 14.4 kV
10,000 A rms symmetrical at 14.4 kV for 0.17 s after 10 consecutive successful switching operations.
10,000 A rms symmetrical for 0.17 s
3,500 A rms symmetrical for 3.0 s



(FT215)15 kV 200 A LOADBREAK
FEEDTHRU BUSHING INSERT



(BI215) 15 KV 200 A LOADBREAK
BUSHING INSERT



(BI225) 25 KV 200 A LOADBREAK
BUSHING INSERT

CATALOG NUMBER INFORMATION FOR 200 A LOADBREAK BUSHING INSERTS (BI215, BI225 & FT215)

